

# SR-1000 Glide-Lock Strainer

## Instruction Manual

The SR-1000 Glide Lock Strainer is designed for super smooth "gliding" action, and easy and accurate fine tuning of snare tension. Both the throwoff lever and tension adjustment knob lock to prevent loosening no matter how hard you play. The throwoff and butt plate can be removed from the drum with the snares still attached thus leaving all snare settings undisturbed while the bottom head is changed. After the bottom head is replaced, the throwoff and butt can be reattached to the drum and the snares will be perfectly set and aligned as before removal.

### Throwoff Side

To switch the strainer to the ON position, turn the lever counterclockwise until it stops. It will lock automatically without having to depress the push button at the end of the lever. (Fig.1)

To switch the strainer OFF, press the button at the end of the lever and turn the lever clockwise. (Fig.2)

Note: The strainer makes a faint "click" sound when switched to the ON position.  
For silent activation of the strainer, keep the button at the end of the lever depressed while turning the lever to the ON position and release the button when the lever stops.

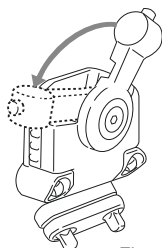


Fig. 1

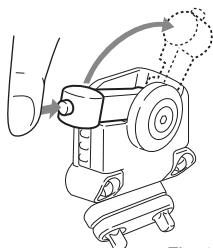


Fig. 2

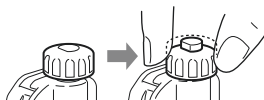


Fig. 3

### Adjustment Side

To adjust the tension of the snares, push down on the dial and rotate it clockwise to tighten and counterclockwise to loosen the snares. (Fig.3) (Fig.4-A, 4-B)

Releasing the dial will lock the tension setting. If the dial does not lock, rotate it a little further either way and lift it until it locks. Use the triangle pointer on the dial as a reference for tension settings. (Fig.5)

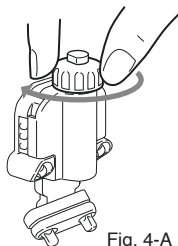


Fig. 4-A

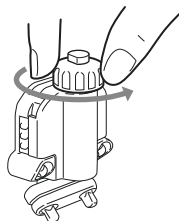


Fig. 4-B



Fig. 5

Note: When loosening the snares, the slider will eventually disengage from the adjustment screw when it runs out of threads. In this situation, push the slider upward and turn the dial clockwise until the threads reengage. (Fig.6)

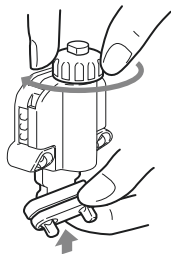
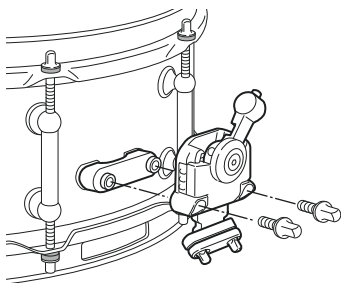


Fig. 6

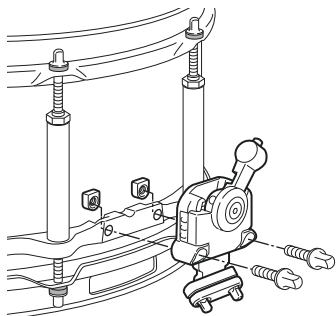
## Replacing the Bottom Head

When changing the bottom head, the two sides of the SR-1000 can be removed from the drum with the snares still attached thus leaving all snare settings undisturbed. Remove the throwoff and adjustment sides of the strainer by removing the two key bolts on each side. After changing the head, reattach the throwoff and adjustment sides of the strainer and tighten the key bolts securely (do not overtighten).

Note: When replacing the strainer on Free Floating snare drums, be sure the D-shaped nuts are between the shell and the chassis (the key bolts thread into these nuts).



ULTRA CAST / WOOD SNARE DRUM



FREE FLOATING SNARE DRUM

**Pearl**

<https://www.pearldrum.com>

Products and specifications are subject to change without notice.

Printed in Taiwan  
-Apr 2005-

California Proposition 65

