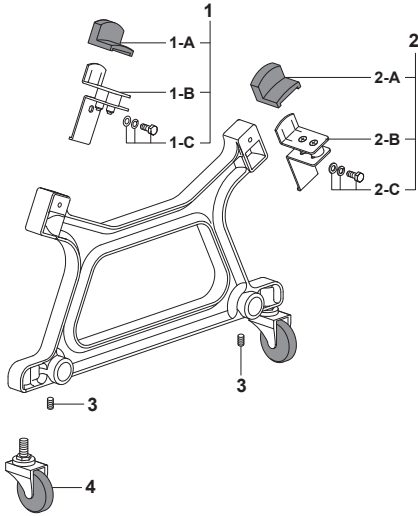


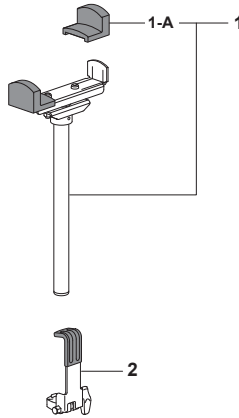
CONCERT BASS DRUM STANDS

CBS-40C

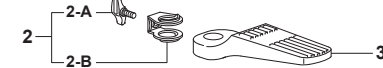
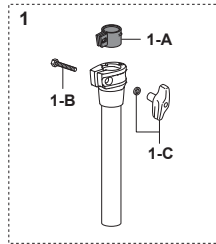
A



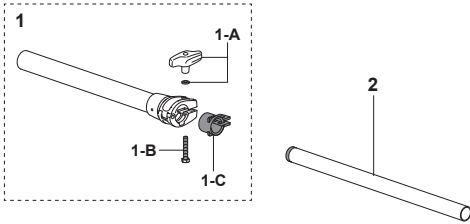
B



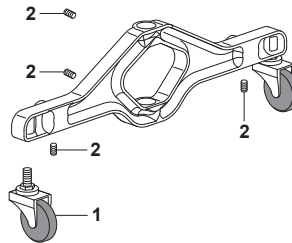
C



E



D



- A DC-302AN Base Drum Receiver Assy. (CBS-40C)**
- 1 PR-746AL Bass Drum Holder Assy.
 - 1-A NP-166 Rubber Sleeve
 - 1-B PR-743AL Holder Plate Assy.
 - 1-C SC-170A Bolt w/Washers (one set)
 - 2 PR-746AR Bass Drum Holder Assy.
 - 2-A NP-166 Rubber Sleeve
 - 2-B PR-743AR Holder Plate Assy.
 - 2-C SC-170A Bolt w/Washers (one set)
 - 3 SB-55 Allen Screw (one each)
 - 4 WL-5 Caster (one each)
- B CBU-40A Upper Tube Assy. Complete**
- 1 PR-745A Upper Tube Assy.
 - 1-A NP-166 Rubber Sleeve (one each)
 - 2 CBU-4HK Hook Assy.
- C CBL-40A Lower Tube Assy. Complete**
- 1 PP-76LA Tube Assy. Complete
 - 1-A NP-366 Nylon Bushing
 - 1-B HXB-635 Clamp Bolt
 - 1-C UGN-6 Die-Cast Wing Nut w/Washer
 - 2 PR-96NA Bracket Assy. for Foot Rest
 - 2-A UGB-820 Die-Cast Wing Bolt
 - 2-B PR-96N Bracket for Footrest
 - 3 DC-304 Footrest
- D DC-303AN Base Assy. Complete**
- 1 WL-5 Caster (one each)
 - 2 SB-55 Allen Screw (one each)
- E PP-140WA Width Adjustment Tube Assy. Complete**
- 1 PP-140A Tube Assy. Complete
 - 1-A UGN-6 Die-Cast Wing Nut w/Washer
 - 1-B HXB-635 Clamp Bolt
 - 1-C NP-366 Nylon Bushing
 - 2 PP-68A Pipe w/Cap